



EuroNav V Part Task Trainer

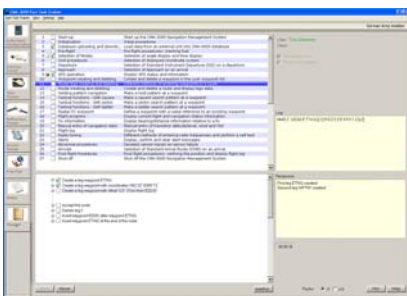
The unique «full free play» **EuroNav V Part Task Trainer** is aimed for Initial and Recurrent Training. The objective of the EuroNav V Part Task Trainer is to familiarize the user with the EuroNav V Digital Map System, as well as «hands on» practice to gain experience in the operational functions of the Digital Map System in all phases of operation.



EuroNav V Control Panel



Included MEGHAS cockpit instruments and panels



Part Task Trainer Software

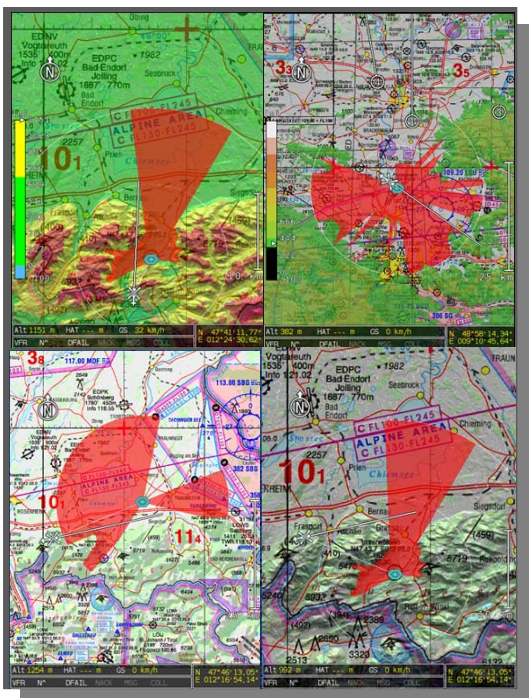


Part Task Trainer Pedestal Console

The EuroNav V Control Panel high-end replica hardware is a “true” replica of the real instrument. It appears (looks and feels) like the original instrument.

Product Features:

- Aimed for individual and/or instructor guided training.
- «Full Free Play» of the EuroNav V System and all other instruments included.
- Aircraft behaviour, cockpit instruments, behind panel systems and user input from panels are simulated in real-time.
- Instruments familiarization module.
- Customized Exercise Trainer, initially supplied with a number of predefined Exercises.
- Customized Task Trainer, initially supplied with a number of predefined Tasks.
- Customized Mission Trainer, initially supplied with some predefined Missions.
- Customized Malfunction Trainer. Only Malfunctions relevant to the present status of operations are available, likewise corresponding customer approved Procedure related to the Malfunction.
- Comprehensive configuration and administration management system.
- Student tracking and monitoring system.
- Extensive Exercise, Task and Mission Builders. The Builders may be used to edit, remove or add new Exercises, Tasks and Missions to the Part Task Trainer.
- Ground Data Editor.
- Aircraft Setting Configuration on Entry and during Flight. The Part Task Trainer features possibilities to vary wind and Speed Multiplication factors (1X, 2X, 3X, 4X, 5X, 10X).
- Reposition is available from the Manual Flight Menu direct action key to any position contained in the database. Selection to Waypoint, Airfields/Runways, VOR, ILS, ADF at selected Heading and Altitude.
- The EuroNav V Part Task Trainer Modules may be supplied as Full Free Play Objects to be incorporated into other 3rd party environments.



EuroNav V



Based on a cooperation agreement with EUROavionics the EuroNav V Part Task Trainer solution includes the real original EuroAvionics EuroNav V software. The EuroNav V software is seamlessly integrated into the Part Task Trainer as such, hence secure that the functionality and performance is like the real thing. This will also take care of product updates.

The EuroNav V Part Task Trainer may be integrated together with the Flight Management Part Task Trainer to enhance training value.



Customized cockpit environment

Customization:

The EuroNav V Part Task Trainer has a modular design that is easy to customize, modify or enhance to fit any customer requirements and/or needs, and hence give the best training value for money. Customization may include:

- Adaptation to customer aircraft and cockpit configuration.
- Include or exclude cockpit instruments.
- Software only or replica hardware instruments.
- Stand-alone, networked or classroom configuration.
- Exercises, Tasks and Missions to include.
- Malfunctions and procedures to include.
- Other language versions than English.
- Expandable to FNPT or FTD environments, or any level in between.

The EuroNav V Part Task Trainer comprises a generic flight model that generally aims to represent the helicopter in ISA. It is possible to Fly Manual, as well as by use of the Autopilot. Navigation is performed by use of either Fly Manual or by all available navigation sources according to generic navigation parameters.

The system is capable of handling ARINC 424 navigation database files. There is a database organizer as part of the system where the operator may define the operation area in lat/long, where only data inside the selected area is present. The database has provisions to cover worldwide data.

Product Requirements:

- Run on standard low cost off the shelf multimedia PC Hardware (workstation or laptop).
- Run in a two or three screen configuration.
- Run in MS-Windows XP or higher operating system environment.
- Runs as stand-alone or network solution, including classroom configuration.
- Future-proof design ready for next generation operating systems.
- Modular design that is easy to configure, modify and enhance according to customer needs.